



FDP on Business Data: Analysis, Visualization and Intelligence



Power Pivot

Vs.



Power Query



Power BI

**BE
ON
TIME!**

Save the Dates

June 2 & 3, 2017

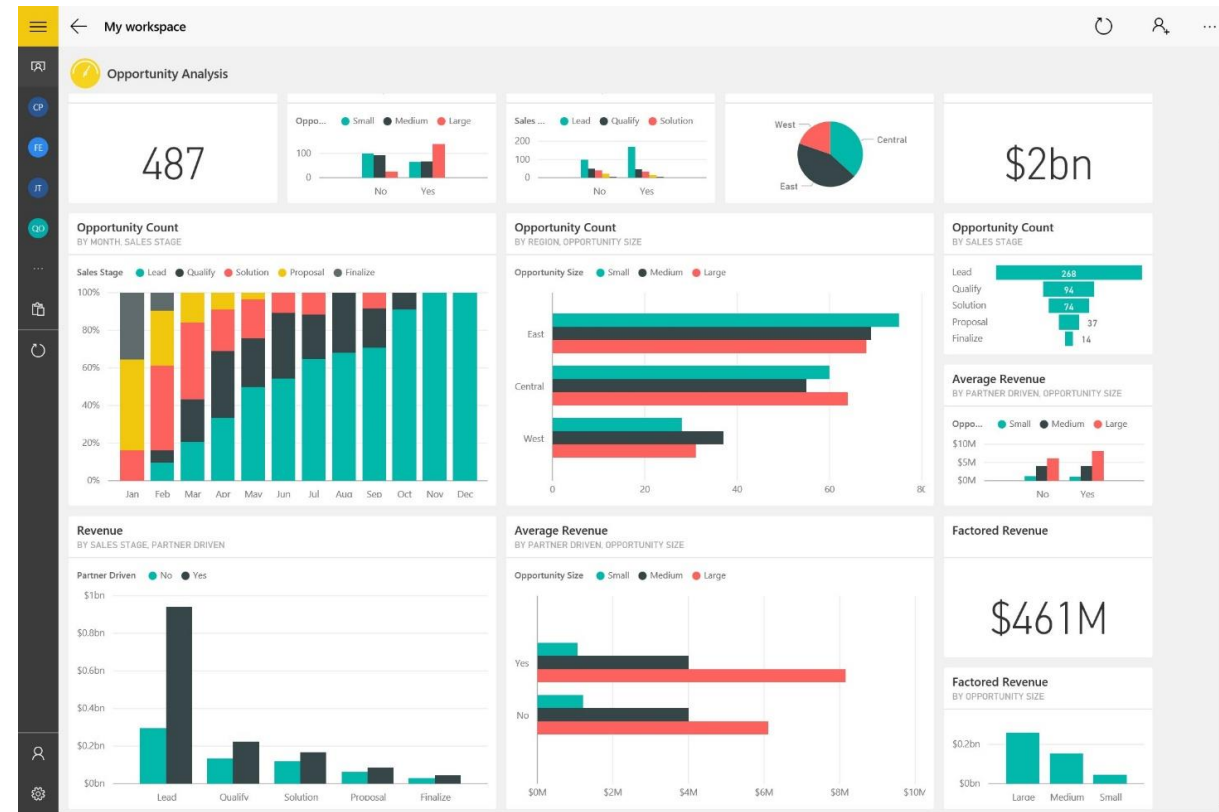
Time: 9.00 AM to 6.00 PM

TOPICS COVERED

- Pivot Table
- Data Crunching
- Advanced Analysis
- Slicers
- Pivot Charts
- Dashboards
- Conditional Formatting
- Preparation of Source Data
- Data Cleansing Techniques
- Power Query
- Using Excel Forms
- Power Pivot, Data Modelling
- Power BI (Business Intelligence) Desktop & Web App
- Preparation / Sharing & Publishing Reports Offline & Online.

SELECT CASES

- Retail Sales Data Analysis
- Preparation of Sales Reports
- Advanced Sales Analysis
- Performance Evaluation
- Preparation of Classic Dashboard
- Data Cleansing and Automated Reports
- Data Extraction from Websites – Stock Indices Analysis
- Employee Attrition Analysis
- Multiple Response sets – Survey data Analysis
- Online Dashboards



REQUIREMENTS

- Participants **must have an Official Email ID (Organization Email ID)** to access / share Online Contents & Reports using Power Bi
- Participants may **carry their Laptops with MS Office 2013 or 2016 Pro Plus version installed.**
- **Knowledge of MS Excel Basics is Mandatory for the participants**



RESOURCE PERSON & PROGRAMME COORDINATOR

Dr.P. Kamalakannan is working as an **Assistant Professor**, Sona School of Management, Salem. Having 12+ years of experience in academics, Certifications from Microsoft, facilitated various industry institute interactions, Placements and Consultancy assignments. Acted as Resource person for 100 sessions +, trained Industry, Faculty & Students on Business Analytics & Intelligence using Excel and Power BI.



No. of Seats: 30

Registration Fees

- **Rs. 2500/-**
- To Register click: <http://bit.ly/2pAr8b8>
- 10% Discount for 3 + Participations from a Single Institution
- Course Fee includes Kit, Certificates, Photos, Refreshments and Lunch on both days.
- DD in favour of: "Sona College of Technology"



FDP Coordinator

Email : kamal@sonamgmt.org
Landline : 0427 4099818
Cell : 9865071197
Website : www.sonamgmt.org

